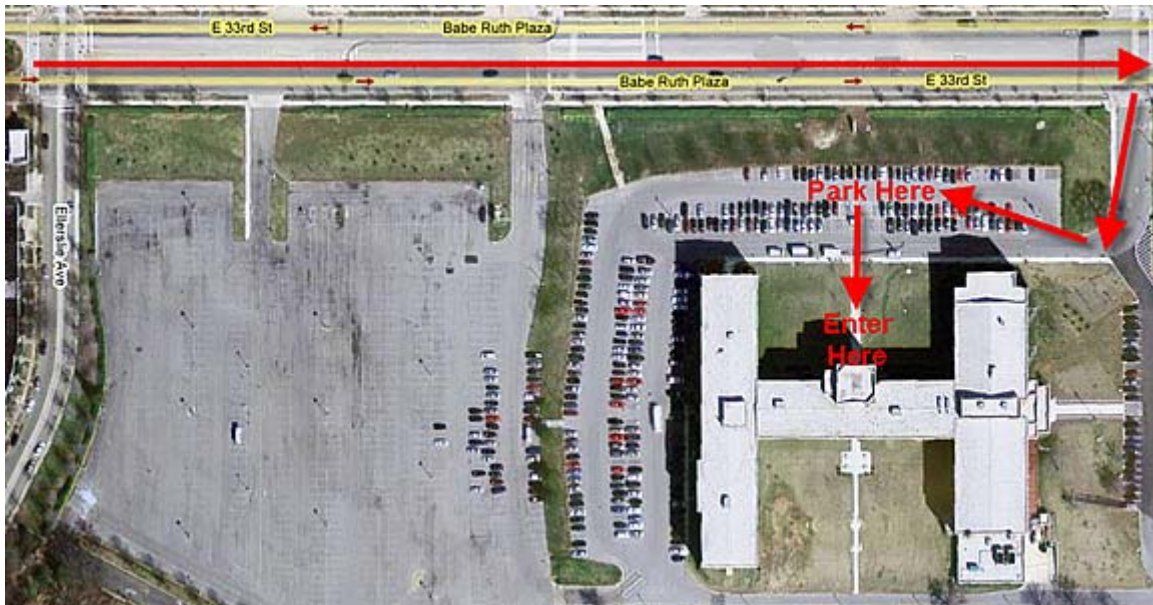


To:
Johns Hopkins at Eastern
Terrace Level / Room E001
1101 East 33rd Street
Baltimore, MD 21218

From:
Johns Hopkins Hospital Main Campus
600 North Wolfe Street
Baltimore MD, 21287

| | |
|---|-----------|
| Start off on Wolfe Street heading South toward Jefferson Street | 0.1 miles |
| Turn Right onto Orleans Street/US-40 West | 0.1 miles |
| Turn Right onto North Broadway | 1.3 miles |
| Turn Right onto Harford Road/MD-147 | 0.4 miles |
| Turn Left onto Gorsuch Avenue | 0.7 miles |
| Turn Right onto Ellerslie Avenue | 0.1 miles |
| Turn Right onto 33 rd Street | 0.1 miles |
| Turn Right into Johns Hopkins at Eastern after passing Ellerslie Avenue | End |

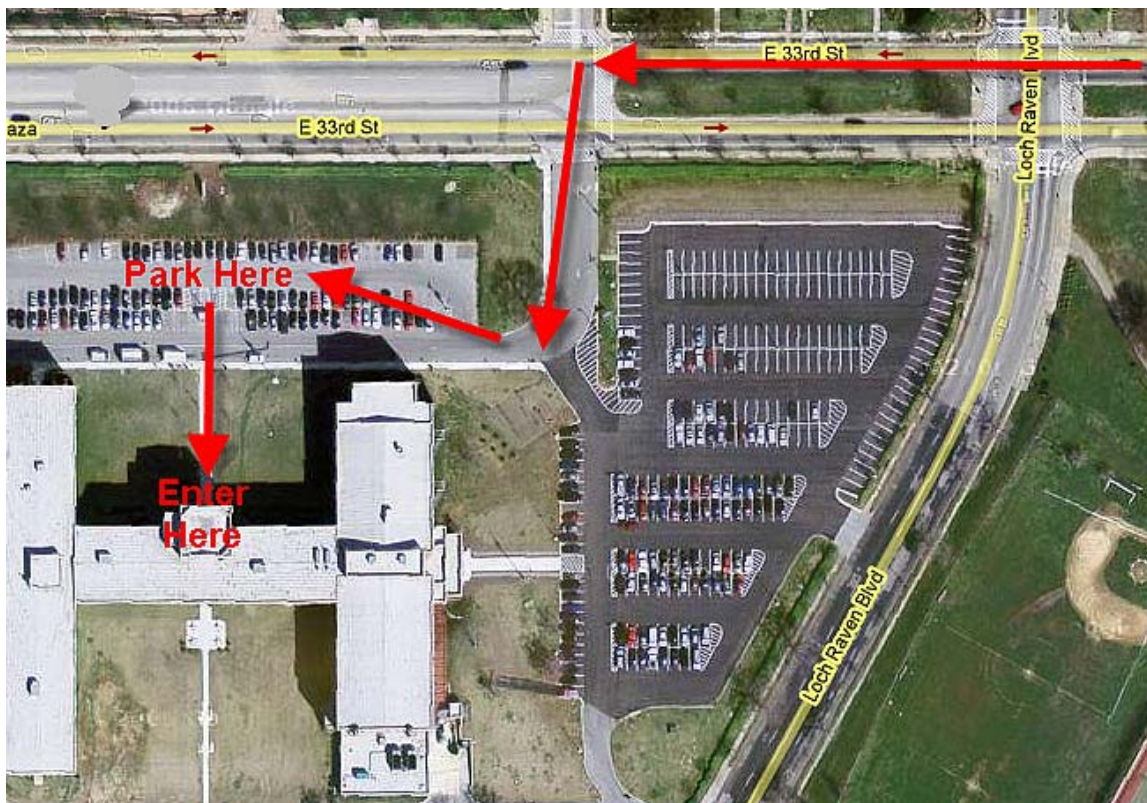
Total Time: 11 minutes
Total Distance: 3.29 miles



To:
Johns Hopkins at Eastern
1101 East 33rd Street
Baltimore, MD 21218
Terrace Level / Room E001

From:
Johns Hopkins at Bayview
4940 Eastern Ave
Baltimore, MD 21224

| | |
|---|-----------|
| Start off on Eastern Avenue heading West toward Ponca Street | 0.1 miles |
| Turn Right onto Ponca Street | 0.1 miles |
| Turn Left onto MD-150/Ponca Street | 0.2 miles |
| Turn Right onto Lombard Street | 0.2 miles |
| Merge onto I-895 North/Harbor Tunnel Trwy via the ramp on the left | 0.7 miles |
| Take Pulaski Hwy/US-40 East Exit 13 toward Erdman Avenue | 0.1 miles |
| Take ramp toward Erdman Avenue | 0.1 miles |
| Turn Slight Right onto Debelius Avenue | 0.1 miles |
| Turn Right onto Erdman Avenue/MD-151 North, follow Erdman Avenue | 3.0 miles |
| Turn Left onto Harford Road/MD-147 | 0.1 miles |
| Turn Right onto 32 nd Street | 0.1 miles |
| Turn Slight Right onto 33 rd Street | 0.7 miles |
| Turn Left into Johns Hopkins at Eastern after passing Loch Raven Blvd | End |
| Total Time: 14 minutes | |
| Total Distance: 5.72 miles | |



To:
Johns Hopkins at Eastern
1101 East 33rd Street
Baltimore, MD 21218
Terrace Level / Room E001

From:
Home Care Group
2400 Broening HWY
Baltimore MD, 21224

| | |
|---|-----------|
| Start on Broening Highway heading North toward Keith Avenue | 0.7 miles |
| Turn Left onto Holabird Avenue | 0.4 miles |
| Stay Straight onto Poncabird Pass | 0.1 miles |
| Poncabird Pass becomes Ponca Street | 1.0 miles |
| Turn Left onto MD-150/Ponca Street | 0.2 miles |
| Turn Right onto Lombard Street | 0.2 miles |
| Merge onto I-895 North/Harbor Tunnel Trwy via the ramp on the left | 0.7 miles |
| Take the Pulaski Highway/US-40 Exit 13 toward Erdman Avenue | 0.1 miles |
| Take the ramp toward Erdman Avenue | 0.1 miles |
| Turn Slight Right onto Debelius Avenue | 0.1 miles |
| Turn Right onto Erdman Avenue/MD-151 North, follow Erdman Avenue | 3.0 miles |
| Turn Left onto Harford Road/MD-147 | 0.1 miles |
| Turn Right onto 32 nd Street | 0.1 miles |
| Turn Slight Right onto 33 rd Street | 0.7 miles |
| Turn Left into Johns Hopkins at Eastern after passing Loch Raven Blvd | End |

Total Time: 19 minutes
Total Distance: 8.03 miles



To:
Johns Hopkins at Eastern
1101 East 33rd Street
Baltimore, MD 21218
Terrace Level / Room E001

From:
Howard County General Hospital
5755 Cedar Lane
Columbia, MD 21044

| | |
|---|------------|
| Start off on Cedar Lane heading North toward Little Patuxent Parkway | 0.1 miles |
| Turn Right onto Little Patuxent Parkway | 1.1 miles |
| Turn Right onto Broken Land Parkway | 3.1 miles |
| Merge onto MD-32 East toward I-95 | 1.7 miles |
| Merge onto I-95 North via Exit 13A on the Left toward Baltimore | 13.9 miles |
| Merge onto I-395 North via Exit 53 toward MLK Blvd/Downtown | 0.8 miles |
| Take Martin Luther King Blvd exit | 0.3 miles |
| Turn Slight Left onto Martin Luther King Blvd | 1.9 miles |
| Stay Straight onto Howard Street | 0.6 miles |
| Turn Right onto North Avenue/US-1 North | 0.1 miles |
| Turn Left onto Charles Street | 1.1 miles |
| Turn Right onto 33 rd Street | 0.9 miles |
| Turn Right into Johns Hopkins at Eastern after passing Ellerslie Avenue | End |

Total Time: 39 minutes

Total Distance: 26.18 miles

